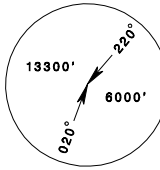
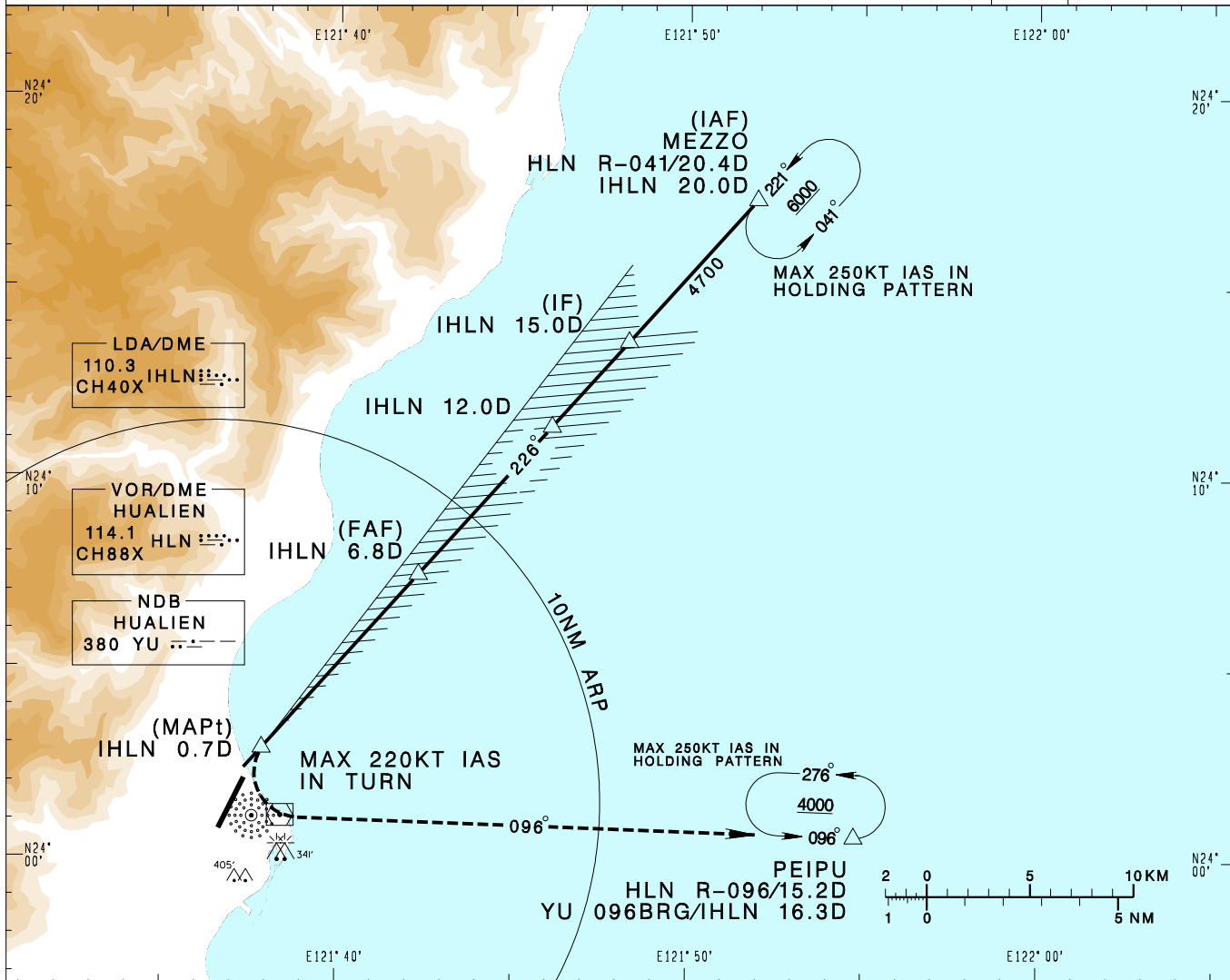


花蓮機場
HUALIEN AD

RCYU
LDA RWY21

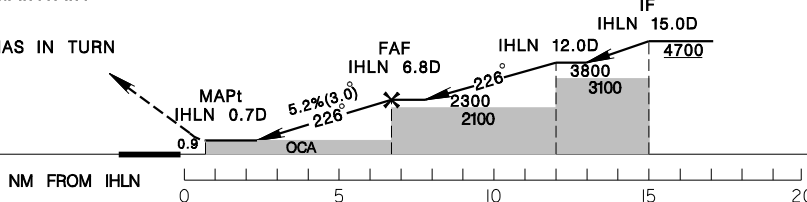
TAIPEI APP 124.0 119.1 330.2 276.8				HUALIEN TWR 118.1 126.18 236.6				VAR 4° W  MSA HLN VOR 25NM
Apt Elev: 51'		Rwy21 THR Elev: 51'		Trans Level: FL130		Trans Alt: 11,000'		
BEARINGS ARE MAGNETIC; DISTANCES ARE NAUTICAL MILES; ELEVATIONS, HEIGHTS IN FEET								



DIST to IHLN	2DME	3DME	4DME	5DME	6DME
ADVISORY ALT	810	1120	1440	1760	2080

MISSED APCH:
TURN LEFT TO TRACK HLN R-096 /
YU 096BRG TO PEIPU, MAINTAIN
4000 AND HOLD.

*MISSED APCH MAX 220KT IAS IN TURN



MINIMA (OCA IN FT, VIS IN M, OCH IN FT)

CATEGORY	A	B	C	D
STRAIGHT IN	520/1200 469	520/1600 469	520/1800 469	520/1800 469
STRAIGHT IN (ALS OUT)	520/1600 469	520/1600 469	520/2200 469	520/2200 469
CIRCLING	700/1900 649	700/2800 649	800/3700 749	800/4600 749

NOTE
1. LOC COURSE OFFSETS FROM LANDING RWY BY 15DEG, & FINAL APCH COURSE CROSSES RWY CENTERLINE EXTENSION AT 0.85NM FROM THR 21
2. CIRCLING NOT AUTHORIZED WEST OF RWY.
3. A 341ft MSL STACK at 1.52NM EAST OF THR03.
4. A 405ft MSL TREE at 1.18NM SE OF THR03.
5. CAUTION HIGH TERRAIN WEST OF THE AIRPORT.
* DME REQUIRED

CHANGES: NEW PAGE NUMBER